



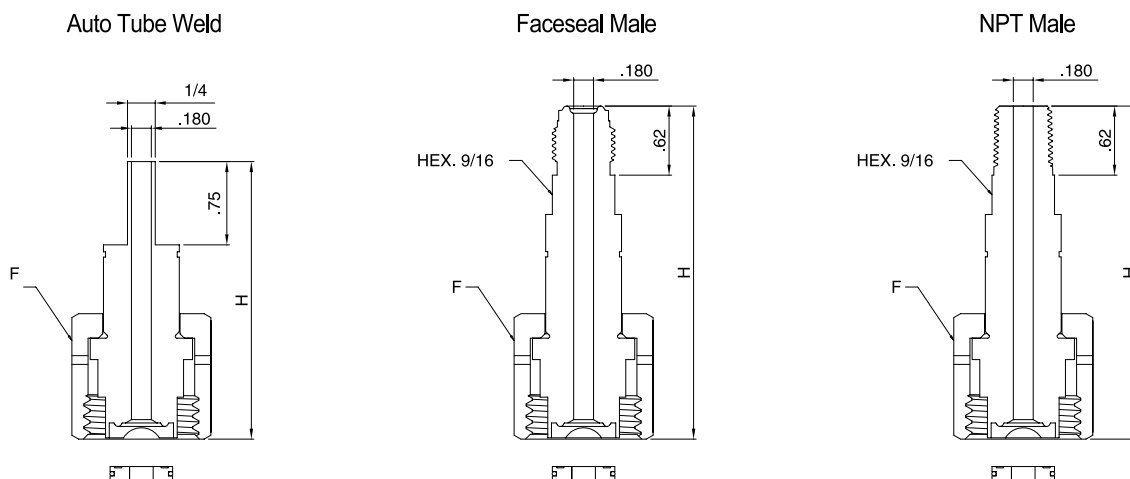
# CGA DISS Series

“DISS NEJIREN”

- NIPPLES ..... 5~6
- NUTS ..... 5~6
- GASKETS ..... 6
- INLET CONNECTIONS ..... 5~6
- OUTLET BLANK PLUGS ..... 7
- OUTLET ADAPTERS ..... 7
- CYLINDER VALVE OUTLET CAPS ..... 8

# CGA DISS Series

## INLET CONNECTIONS (Nipple, Nut and Gasket included)



CGA DISS Number	End Connection	Assembly Part Number	H Overall Length		F Hex Flat	Gasket Part Number (Nickel)	Gasket Part Number (PCTFE)	Gasket Part Number (Aluminum)
			in	mm				
<b>632</b>	1/4" Auto Tube Weld	DISS632-4TW-N-EP	2.50	63.5	1-1/4	DISS-NI-EP	DISS-PCTFE	DISS-AL
	1/4" Faceseal Male	DISS632-4VM-N-EP	3.00	76.2				
	1/4" NPT Male	DISS632-4NM-N-BA	3.00	76.2				
<b>634</b>	1/4" Auto Tube Weld	DISS634-4TW-N-EP	2.50	63.5	1-1/4	DISS-NI-EP	DISS-PCTFE	DISS-AL
	1/4" Faceseal Male	DISS634-4VM-N-EP	3.00	76.2				
	1/4" NPT Male	DISS634-4NM-N-BA	3.00	76.2				
<b>636</b>	1/4" Auto Tube Weld	DISS636-4TW-N-EP	2.50	63.5	1-1/4	DISS-NI-EP	DISS-PCTFE	DISS-AL
	1/4" Faceseal Male	DISS636-4VM-N-EP	3.00	76.2				
	1/4" NPT Male	DISS636-4NM-N-BA	3.00	76.2				
<b>638</b>	1/4" Auto Tube Weld	DISS638-4TW-N-EP	2.50	63.5	1-1/4	DISS-NI-EP	DISS-PCTFE	DISS-AL
	1/4" Faceseal Male	DISS638-4VM-N-EP	3.00	76.2				
	1/4" NPT Male	DISS638-4NM-N-BA	3.00	76.2				
<b>640</b>	1/4" Auto Tube Weld	DISS640-4TW-N-EP	2.50	63.5	1-1/4	DISS-NI-EP	DISS-PCTFE	DISS-AL
	1/4" Faceseal Male	DISS640-4VM-N-EP	3.00	76.2				
	1/4" NPT Male	DISS640-4NM-N-BA	3.00	76.2				
<b>642</b>	1/4" Auto Tube Weld	DISS642-4TW-N-EP	2.50	63.5	1-1/4	DISS-NI-EP	DISS-PCTFE	DISS-AL
	1/4" Faceseal Male	DISS642-4VM-N-EP	3.00	76.2				
	1/4" NPT Male	DISS642-4NM-N-BA	3.00	76.2				
<b>712</b>	1/4" Auto Tube Weld	DISS712-4TW-N-EP	2.50	63.5	1-3/8	DISS-NI-EP	DISS-PCTFE	DISS-AL
	1/4" Faceseal Male	DISS712-4VM-N-EP	3.00	76.2				
	1/4" NPT Male	DISS712-4NM-N-BA	3.00	76.2				
<b>714</b>	1/4" Auto Tube Weld	DISS714-4TW-N-EP	2.50	63.5	1-3/8	DISS-NI-EP	DISS-PCTFE	DISS-AL
	1/4" Faceseal Male	DISS714-4VM-N-EP	3.00	76.2				
	1/4" NPT Male	DISS714-4NM-N-BA	3.00	76.2				
<b>716</b>	1/4" Auto Tube Weld	DISS716-4TW-N-EP	2.50	63.5	1-3/8	DISS-NI-EP	DISS-PCTFE	DISS-AL
	1/4" Faceseal Male	DISS716-4VM-N-EP	3.00	76.2				
	1/4" NPT Male	DISS716-4NM-N-BA	3.00	76.2				



# CGA DISS Series

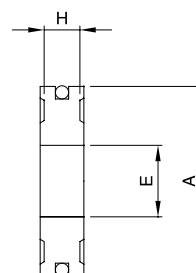
## INLET CONNECTIONS (Nipple, Nut and Gasket included)

Continued from previous page

CGA DISS Number	End Connection	Assembly Part Number	H Overall Length		F Hex Flat	Gasket Part Number (Nickel)	Gasket Part Number (PCTFE)	Gasket Part Number (Aluminum)
			in	mm				
718	1/4" Auto Tube Weld	DISS718-4TW-N-EP	2.50	63.5	1-3/8	DISS-NI-EP	DISS-PCTFE	DISS-AL
	1/4" Faceseal Male	DISS718-4VM-N-EP	3.00	76.2				
	1/4" NPT Male	DISS718-4NM-N-BA	3.00	76.2				
720	1/4" Auto Tube Weld	DISS720-4TW-N-EP	2.50	63.5	1-3/8	DISS-NI-EP	DISS-PCTFE	DISS-AL
	1/4" Faceseal Male	DISS720-4VM-N-EP	3.00	76.2				
	1/4" NPT Male	DISS720-4NM-N-BA	3.00	76.2				
722	1/4" Auto Tube Weld	DISS722-4TW-N-EP	2.50	63.5	1-3/8	DISS-NI-EP	DISS-PCTFE	DISS-AL
	1/4" Faceseal Male	DISS722-4VM-N-EP	3.00	76.2				
	1/4" NPT Male	DISS722-4NM-N-BA	3.00	76.2				
724	1/4" Auto Tube Weld	DISS724-4TW-N-EP	2.50	63.5	1-3/8	DISS-NI-EP	DISS-PCTFE	DISS-AL
	1/4" Faceseal Male	DISS724-4VM-N-EP	3.00	76.2				
	1/4" NPT Male	DISS724-4NM-N-BA	3.00	76.2				
726	1/4" Auto Tube Weld	DISS726-4TW-N-EP	2.50	63.5	1-3/8	DISS-NI-EP	DISS-PCTFE	DISS-AL
	1/4" Faceseal Male	DISS726-4VM-N-EP	3.00	76.2				
	1/4" NPT Male	DISS726-4NM-N-BA	3.00	76.2				
728	1/4" Auto Tube Weld	DISS728-4TW-N-EP	2.50	63.5	1-3/8	DISS-NI-EP	DISS-PCTFE	DISS-AL
	1/4" Faceseal Male	DISS728-4VM-N-EP	3.00	76.2				
	1/4" NPT Male	DISS728-4NM-N-BA	3.00	76.2				

# CGA DISS Series

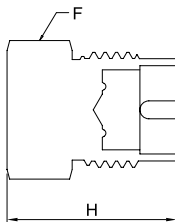
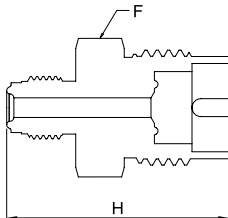
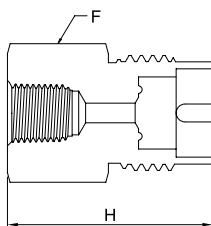
## GASKETS (CGA DISS 632~728)



Gasket Part Number	Material	A		E		H	
		in	mm	in	mm	in	mm
DISS-NI-EP	Nickel 200	.56	14.2	.21	5.3	.105	2.7
DISS-PCTEE	PCTFE	.56	14.2	.21	5.3	.125	3.2
DISS-AL	Aluminum	.56	14.2	.21	5.3	.105	2.7

# CGA DISS Series

## OUTLET ADAPTERS AND BLANK PLUGS

**Blank Plug**

**Faceseal Male**

**NPT Female**


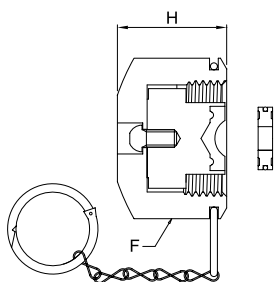
CGA DISS Number	End Connection	Part Number	H Overall Length		F Hex Flat
			in	mm	
632	Blank Plug	BKP632-642-□	1.53	38.9	1-1/8
	1/4" Faceseal Male	OTA632-4VM-□	2.00	50.8	
	1/4" NPT Female	OTA632-4NF-□	1.85	47.0	
634	Blank Plug	BKP632-642-□	1.53	38.9	1-1/8
	1/4" Faceseal Male	OTA634-4VM-□	2.00	50.8	
	1/4" NPT Female	OTA634-4NF-□	1.85	47.0	
636	Blank Plug	BKP632-642-□	1.53	38.9	1-1/8
	1/4" Faceseal Male	OTA636-4VM-□	2.00	50.8	
	1/4" NPT Female	OTA636-4NF-□	1.85	47.0	
638	Blank Plug	BKP632-642-□	1.53	38.9	1-1/8
	1/4" Faceseal Male	OTA638-4VM-□	2.00	50.8	
	1/4" NPT Female	OTA638-4NF-□	1.85	47.0	
640	Blank Plug	BKP632-642-□	1.53	38.9	1-1/8
	1/4" Faceseal Male	OTA640-4VM-□	2.00	50.8	
	1/4" NPT Female	OTA640-4NF-□	1.85	47.0	
642	Blank Plug	BKP632-642-□	1.53	38.9	1-1/8
	1/4" Faceseal Male	OTA642-4VM-□	2.00	50.8	
	1/4" NPT Female	OTA642-4NF-□	1.85	47.0	
712	Blank Plug	BKP712-718-□	1.53	38.9	1-1/4
	1/4" Faceseal Male	OTA712-4VM-□	2.00	50.8	
	1/4" NPT Female	OTA712-4NF-□	1.85	47.0	
714	Blank Plug	BKP712-718-□	1.53	38.9	1-1/4
	1/4" Faceseal Male	OTA714-4VM-□	2.00	50.8	
	1/4" NPT Female	OTA714-4NF-□	1.85	47.0	
716	Blank Plug	BKP712-718-□	1.53	38.9	1-1/4
	1/4" Faceseal Male	OTA716-4VM-□	2.00	50.8	
	1/4" NPT Female	OTA716-4NF-□	1.85	47.0	
718	Blank Plug	BKP712-718-□	1.53	38.9	1-1/4
	1/4" Faceseal Male	OTA718-4VM-□	2.00	50.8	
	1/4" NPT Female	OTA718-4NF-□	1.85	47.0	
720	Blank Plug	BKP720-728-□	1.53	38.9	1-1/4
	1/4" Faceseal Male	OTA720-4VM-□	2.00	50.8	
	1/4" NPT Female	OTA720-4NF-□	1.85	47.0	
722	Blank Plug	BKP720-728-□	1.53	38.9	1-1/4
	1/4" Faceseal Male	OTA722-4VM-□	2.00	50.8	
	1/4" NPT Female	OTA722-4NF-□	1.85	47.0	
724	Blank Plug	BKP720-728-□	1.53	38.9	1-1/4
	1/4" Faceseal Male	OTA724-4VM-□	2.00	50.8	
	1/4" NPT Female	OTA724-4NF-□	1.85	47.0	
726	Blank Plug	BKP720-728-□	1.53	38.9	1-1/4
	1/4" Faceseal Male	OTA726-4VM-□	2.00	50.8	
	1/4" NPT Female	OTA726-4NF-□	1.85	47.0	
728	Blank Plug	BKP720-728-□	1.53	38.9	1-1/4
	1/4" Faceseal Male	OTA728-4VM-□	2.00	50.8	
	1/4" NPT Female	OTA728-4NF-□	1.85	47.0	

□: BA or EP



# CGA DISS Series

## CYLINDER VALVE OUTLET CAPS (Chain, Ring and Gasket included)



CGA DISS Number	Assembly Part Number	H Overall Length		F Hex Flat	Gasket Part Number (Nickel)	Gasket Part Number (PCTFE)	Gasket Part Number (Aluminum)
		in	mm				
632	CVOC632-642-□	.98	24.9	1-1/4	DISS-NI-EP	DISS-PCTEE	DISS-AL
634	CVOC632-642-□	.98	24.9	1-1/4	DISS-NI-EP	DISS-PCTEE	DISS-AL
636	CVOC632-642-□	.98	24.9	1-1/4	DISS-NI-EP	DISS-PCTEE	DISS-AL
638	CVOC632-642-□	.98	24.9	1-1/4	DISS-NI-EP	DISS-PCTEE	DISS-AL
640	CVOC632-642-□	.98	24.9	1-1/4	DISS-NI-EP	DISS-PCTEE	DISS-AL
642	CVOC632-642-□	.98	24.9	1-1/4	DISS-NI-EP	DISS-PCTEE	DISS-AL
712	CVOC712-728-□	.98	24.9	1-3/8	DISS-NI-EP	DISS-PCTEE	DISS-AL
714	CVOC712-728-□	.98	24.9	1-3/8	DISS-NI-EP	DISS-PCTEE	DISS-AL
716	CVOC712-728-□	.98	24.9	1-3/8	DISS-NI-EP	DISS-PCTEE	DISS-AL
718	CVOC712-728-□	.98	24.9	1-3/8	DISS-NI-EP	DISS-PCTEE	DISS-AL
720	CVOC712-728-□	.98	24.9	1-3/8	DISS-NI-EP	DISS-PCTEE	DISS-AL
722	CVOC712-728-□	.98	24.9	1-3/8	DISS-NI-EP	DISS-PCTEE	DISS-AL
724	CVOC712-728-□	.98	24.9	1-3/8	DISS-NI-EP	DISS-PCTEE	DISS-AL
726	CVOC712-728-□	.98	24.9	1-3/8	DISS-NI-EP	DISS-PCTEE	DISS-AL
728	CVOC712-728-□	.98	24.9	1-3/8	DISS-NI-EP	DISS-PCTEE	DISS-AL

□: BA or EP



# CGA Series

“CGA NEJIREN”

- INLET CONNECTIONS ..... 10~11
- NIPPLES ..... 10~11
- NUTS ..... 10~11
- WASHERS ..... 10~11
- OUTLET BLANK PLUGS ..... 12
- OUTLET BLANK CAPS ..... 12
- OUTLET ADAPTERS ..... 12
- CYLINDER VALVE OUTLET PLUGS ..... 13
- CYLINDER VALVE OUTLET CAPS ..... 13

# DIN/JIS Series

“DIN/JIS NEJIREN”

- COMPLETE PIGTAIL CONNECTIONS(DIN/JIS) ... 14
- PIGTAIL HANDLES ..... 15

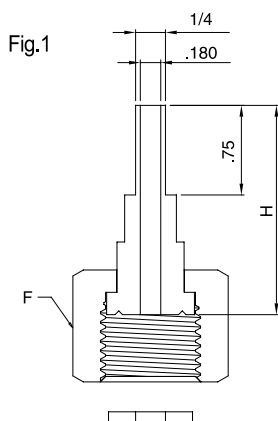




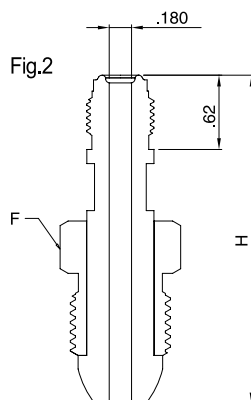
# CGA Series

## INLET CONNECTIONS (Nipple, Nut and Washer included)

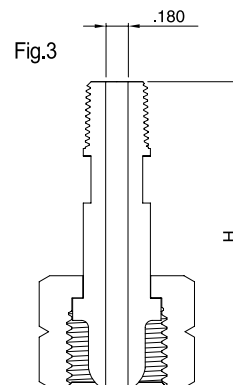
Auto Tube Weld



Face Seal Male



NPT Male



CGA Number	Ref. DWG Inlet Connection	End Connection	Assembly Part Number	H Overall Length	Nipple Part Number	Nut Part Number	F Hex Flat	Washer Part Number (PCTFE)	Washer Part Number (PTFE)
170	Fig. 1	1/4" Auto Tube Weld	CGA170A-4TW-□	1-1/4	CGA170-4TW-□	NUT-170	11/16	-	DG-170-T
		1/8" NPT Male	CGA170A-4NM-□	1-1/4	CGA170-4NM-□				
180	Fig. 1	1/4" Auto Tube Weld	CGA180A-4TW-□	1-1/4	CGA180-4TW-□	NUT-180	3/4	-	DG-180-T
		1/8" NPT Male	CGA180A-4NM-□	1-3/4	CGA180-4NM-□				
290	Fig. 3	1/4" Auto Tube Weld	CGA290A-4TW-□	2-5/8	CGA290-4TW-□	NUT-290	1	-	-
		1/4" NPT Male	CGA290A-4NM-□	2-1/4	CGA290-4NM-□				
296	Fig. 2	1/4" Auto Tube Weld	CGA296A-4TW-□	2-5/8	CGA296-4TW-□	NUT-296	7/8	-	-
		1/4" Face Seal Male	CGA296A-4VM-□	2-3/4	CGA296-4VM-□				
		1/4" NPT Male	CGA296A-4NM-□	3-1/2	CGA296-4NM-□				
320	Fig. 1	1/4" Auto Tube Weld	CGA320A-4TW-□	1-3/4	CGA32-4TW-□	NUT-320	1-1/8	DG-32-K	DG-32-T
		1/4" Face Seal Male	CGA320A-4VM-□	2-3/4	CGA32-4VM-□				
		1/4" NPT Male	CGA320A-4NM-□	3-1/2	CGA32-4NM-□				
326	Fig. 3	1/4" Auto Tube Weld	CGA326A-4TW-□	2-1/4	CGA326-4TW-□	NUT-326	1-1/8	-	-
		1/4" Face Seal Male	CGA326A-4VM-□	2-1/4	CGA326-4VM-□				
		1/4" NPT Male	CGA326A-4NM-□	3	CGA326-4NM-□				
330	Fig. 1	1/4" Auto Tube Weld	CGA330A-4TW-□	1-3/4	CGA32-4TW-□	NUT-330	1-1/8	DG-32K	DG-32-T
		1/4" Face Seal Male	CGA330A-4VM-□	1-3/4	CGA32-4VM-□				
		1/4" NPT Male	CGA330A-4NM-□	2-1/2	CGA32-4NM-□				
346	Fig. 3	1/4" Auto Tube Weld	CGA346A-4TW-□	2-5/16	CGA346-4TW-□	NUT-346	1-1/8	-	-
		1/4" Face Seal Male	CGA346A-4VM-□	2-1/4	CGA346-4VM-□				
		1/4" NPT Male	CGA346A-4NM-□	3	CGA346-4NM-□				
350	Fig. 3	1/4" Auto Tube Weld	CGA350A-4TW-□	2-5/16	CGA350-4TW-□	NUT-350	1-1/8	-	-
		1/4" Face Seal Male	CGA350A-4VM-□	2-1/4	CGA350-4VM-□				
		1/4" NPT Male	CGA350A-4NM-□	3	CGA350-4NM-□				

□: BA or EP

# CGA Series

## INLET CONNECTIONS (Nipple, Nut and Washer included)

■ Continued from previous page

CGA Number	Ref. DWG Inlet Connection	End Connection	Assembly Part Number	H Overall Length	Nipple Part Number	Nut Part Number	F Hex Flat	Washer Part Number (PCTFE)	Washer Part Number (PTFE)
510	Fig. 2	1/4" Auto Tube Weld	CGA510A-4TW-□	2-5/8	CGA50-4TW-□				
		1/4" Faceseal Male	CGA510A-4VM-□	2-3/4	CGA50-4VM-□	NUT-510	1-1/8	-	-
		1/4" NPT Male	CGA510A-4NM-□	3-1/2	CGA50-4NM-□				
540	Fig. 3	1/4" Auto Tube Weld	CGA540A-4TW-□	2-1/4	CGA540-4TW-□				
		1/4" Faceseal Male	CGA540A-4VM-□	2-1/4	CGA540-4VM-□	NUT-540	1-1/8	-	-
		1/4" NPT Male	CGA540A-4NM-□	3	CGA540-4NM-□				
580	Fig. 2	1/4" Auto Tube Weld	CGA580A-4TW-□	2-5/8	CGA50-4TW-□				
		1/4" Faceseal Male	CGA580A-4VM-□	2-3/4	CGA50-4VM-□	NUT-580	1-1/8	-	-
		1/4" NPT Male	CGA580A-4NM-□	3-1/2	CGA50-4NM-□				
590	Fig. 2	1/4" Auto Tube Weld	CGA590A-4TW-□	2-1/2	CGA50-4TW-□				
		1/4" Faceseal Male	CGA590A-4VM-□	2-3/4	CGA50-4VM-□	NUT-590	1-1/8	-	-
		1/4" NPT Male	CGA590A-4NM-□	3-1/2	CGA50-4NM-□				
660	Fig. 1	1/4" Auto Tube Weld	CGA660A-4TW-□	2-3/16	CGA60-4TW-□				
		1/4" Faceseal Male	CGA660A-4VM-□	1-7/8	CGA60-4VM-□	NUT-660	1-1/4	DG-60-K	DG-60-T
		1/4" NPT Male	CGA660A-4NM-□	2-1/2	CGA60-4NM-□				
670	Fig. 1	1/4" Auto Tube Weld	CGA670A-4TW-□	2-3/16	CGA60-4TW-□				
		1/4" Faceseal Male	CGA670A-4VM-□	1-7/8	CGA60-4VM-□	NUT-670	1-1/4	DG-60-K	DG-60-T
		1/4" NPT Male	CGA670A-4NM-□	2-1/2	CGA60-4NM-□				
678	Fig. 1	1/4" Auto Tube Weld	CGA678A-4TW-□	2-1/2	CGA678-4TW-□				
		1/4" Faceseal Male	CGA678A-4VM-□	2	CGA678-4VM-□	NUT-678	1-1/4	DG-66-K	DG-66-T
		1/4" NPT Male	CGA678A-4NM-□	2-1/2	CGA678-4NM-□				
679	Fig. 1	1/4" Auto Tube Weld	CGA679A-4TW-□	2-1/2	CGA679-4TW-□				
		1/4" Faceseal Male	CGA679A-4VM-□	2	CGA679-4VM-□	NUT-679	1-1/4	DG-110-K	DG-110-T
		1/4" NPT Male	CGA679A-4NM-□	3	CGA679-4NM-□				

□: BA or EP



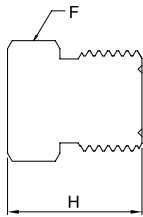


# CGA Series

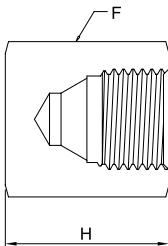
## OUTLET ADAPTERS AND BLANK PLUGS OR CAPS

CGA Fittings

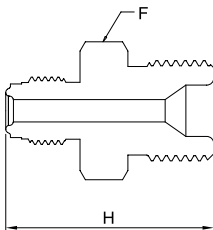
Blank Plug



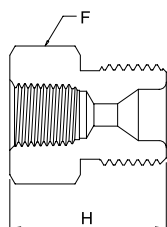
Blank Cap



Faceseal Male



NPT Female

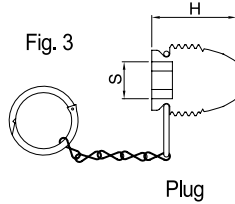
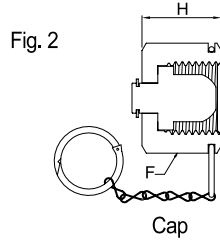
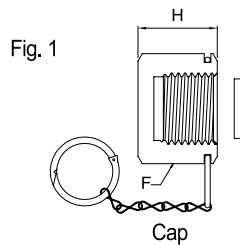


CGA Number	End Connection	Part Number	H Overall Length		F Hex Flat
			in	mm	
296	Blank Cap	BKC-296-□	1.37	34.8	
	1/4" Faceseal Male	OTA-296-4VM-□	2.00	50.8	1-1/8
	1/4" NPT Female	OTA-296-4NF-□	2.00	50.8	
320	Blank Plug	BKP-320-□	1.12	28.4	
	1/4" Faceseal Male	OTA-320-4VM-□	1.74	44.2	1
	1/4" NPT Female	OTA-320-4NF-□	1.12	28.4	
326	Blank Plug	BKP-326-□	1.12	28.4	
	1/4" Faceseal Male	OTA-326-4VM-□	1.74	44.2	1
	1/4" NPT Female	OTA-326-4NF-□	1.31	33.3	
330	Blank Plug	BKP-330-□	1.12	28.4	
	1/4" Faceseal Male	OTA-330-4VM-□	1.74	44.2	1
	1/4" NPT Female	OTA-330-4NF-□	1.31	33.3	
346	Blank Plug	BKP-346-□	1.12	28.4	
	1/4" Faceseal Male	OTA-346-4VM-□	1.88	47.8	1
	1/4" NPT Female	OTA-346-4NF-□	1.31	33.3	
350	Blank Plug	BKP-350-□	1.12	28.4	
	1/4" Faceseal Male	OTA-350-4VM-□	1.88	47.8	1
	1/4" NPT Female	OTA-350-4NF-□	1.31	33.3	
510	Blank Cap	BKC-510-□	1.37	34.8	
	1/4" Faceseal Male	OTA-510-4VM-□	2.00	50.8	1-1/4
	1/4" NPT Female	OTA-510-4NF-□	2.00	50.8	
540	Blank Plug	BKP-540-□	1.12	28.4	
	1/4" Faceseal Male	OTA-540-4VM-□	1.87	47.5	1
	1/4" NPT Female	OTA-540-4NF-□	1.25	31.8	
580	Blank Cap	BKC-580-□	1.37	34.8	
	1/4" Faceseal Male	OTA-580-4VM-□	2.00	50.8	1-1/4
	1/4" NPT Female	OTA-580-4NF-□	2.00	50.8	
590	Blank Cap	BKC-590-□	1.37	34.8	
	1/4" Faceseal Male	OTA-590-4VM-□	2.00	50.8	1-1/4
	1/4" NPT Female	OTA-590-4NF-□	2.00	50.8	
660	Blank Plug	BKP-660-□	0.88	22.4	
	1/4" Faceseal Male	OTA-660-4VM-□	1.50	38.1	1-1/8
	1/4" NPT Female	OTA-660-4NF-□	1.25	31.8	
670	Blank Plug	BKP-670-□	0.88	22.4	
	1/4" Faceseal Male	OTA-670-4VM-□	1.50	38.1	1-1/8
	1/4" NPT Female	OTA-670-4NF-□	1.25	31.8	
678	Blank Plug	BKP-678-□	1.00	25.4	
	1/4" Faceseal Male	OTA-678-4VM-□	1.50	38.1	1-1/8
	1/4" NPT Female	OTA-678-4NF-□	1.38	35.1	
679	Blank Plug	BKP-679-□	0.88	22.4	
	1/4" Faceseal Male	OTA-679-4VM-□	1.75	44.5	1-1/8
	1/4" NPT Female	OTA-679-4NF-□	1.25	31.8	

□: BA or EP

# CGA Series

## CYLINDER VALVE OUTLET PLUGS OR CAPS (Chain, Ring and Polyethylene disc included)

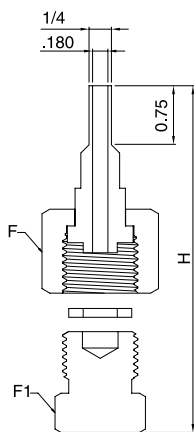


CGA Number	Ref. DWG	Assembly Part Number	H Overall Length		F Hex Flat	S Hex Flat	Washer Material
			in	mm			
320	Fig. 1	CVOC-32	.54	13.7	1	-	Polyethylene disc
326	Fig. 1	CVOC-32	.54	13.7	1	-	Polyethylene disc
330	Fig. 1	CVOC-330	.54	13.7	1	-	Polyethylene disc
346	Fig. 1	CVOC-32	.54	13.7	1	-	Polyethylene disc
350	Fig. 2	CVOC-350	.82	20.8	1-1/8	-	-
510	Fig. 3	CVOP-510	1	25.4	-	3/8	-
580	Fig. 3	CVOP-580	1	25.4	-	3/8	-
590	Fig. 3	CVOP-590	1	25.4	-	3/8	-
660	Fig. 1	CVOC-660	.54	13.7	1-1/4	-	Polyethylene disc
670	Fig. 1	CVOC-67	.54	13.7	1-1/4	-	Polyethylene disc
678	Fig. 1	CVOC-67	.54	13.7	1-1/4	-	Polyethylene disc
679	Fig. 1	CVOC-67	.54	13.7	1-1/4	-	Polyethylene disc



## DIN Series

### COMPLETE PIGTAIL CONNECTIONS (Nipple, Nut, Washer and Blank Plug included)

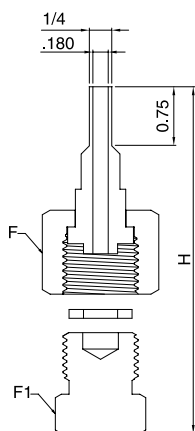


DIN Number	Assembly Part Number	H Overall Length		F Hex Flat	F <sub>1</sub> Hex Flat	Washer Part Number (PTFE)
		in	mm			
1	DIN1A-4TW-T-□	2.96	75.2	1-1/4	1-1/4	DG-DIN1-T
5	DIN5A-4TW-T-□	3.09	78.5	1-1/4	1-1/4	DG-DIN5-T
6	DIN6A-4TW-T-□	2.96	75.2	1-1/4	1-1/4	DG-DIN6-T
8	DIN8A-4TW-T-□	3.09	78.5	1-1/4	1-1/4	DG-DIN8-T
11	DIN11A-4TW-T-□	2.88	73.2	7/8	11/16	DG-DIN11-T
14	DIN14A-4TW-T-□	2.88	73.2	1-1/16	7/8	DG-DIN14-T

□: BA or EP

## JIS Series

### COMPLETE PIGTAIL CONNECTIONS (Nipple, Nut, Washer and Blank Plug included)



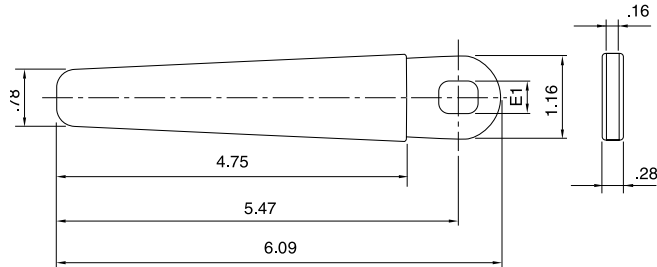
JIS Number	Assembly Part Number	H Overall Length		F Hex Flat mm	F <sub>1</sub> Hex Flat mm	Washer Part Number (PCTFE)
		in	mm			
22R	JIS22RA-4TW-K-□	3.25	82.6	29	29	DG-JIS22-K
22L	JIS22LA-4TW-K-□	3.25	82.6	29	29	DG-JIS22-K
26R	JIS26RA-4TW-K-□	3.14	79.8	32	32	DG-JIS26-K
26L	JIS26LA-4TW-K-□	3.14	79.8	32	32	DG-JIS26-K

JIS Number	Nipple part Number	Nut Part Number	Plug Part Number
22R	JIS22-4TW-□	NUT-JIS22R	BKP-JIS22R
22L	JIS22-4TW-□	NUT-JIS22L	BKP-JIS22L
26R	JIS26-4TW-□	NUT-JIS26R	BKP-JIS26R
26L	JIS26-4TW-□	NUT-JIS26L	BKP-JIS26L

□: BA or EP



# PIGTAIL HANDLES



Part Number		E1 Fiat Size
PLH 7	CGA296~CGA590	11.5
PLH 9	CGA 678	14.4
PLH10	CGA 660,670,679	16.0
PLH JIS	JIS	10.8

Material=304SS



# Gas Connection Assignment Table

CGA Fittings

GAS	CGA DISS	CGA	DIN	JIS
Ammonia	720	705	DIN 6	22-R
Argon	718	580	DIN 6	22-R or 23-R
Arsenic Pentafluoride	642	-	-	-
Arsine	632	350	-	22-L
Boron Trichloride	634	660	DIN 8	-
Boron Trifluoride	642	330	DIN 8	22-L
Carbon Dioxide	716	320	DIN 6	-
Carbon Monoxide	724	350	DIN 5	22-L
Chlorine	728	-	DIN 8	26-R
Diborane	632	350	-	22-L
Dichlorosilane	636	678	DIN 5	-
Diethylzinc	726	510	-	-
Diethyltelluride	726	-	-	-
Dimethylzinc	726	-	-	-
Disilane	632	-	-	-
Germane	632	350 or 660	-	-
Halocarbon 11	716	660	-	-
Halocarbon 12	716	660	DIN 6	-
Halocarbon 13	716	660	DIN 6	-
Halocarbon 14	716	320 or 580	DIN 6	-
Halocarbon 23	716	660	DIN 6	-
Halocarbon 115	716	660	DIN 6	-
Halocarbon 116	716	660	-	-
Helium	718	580	DIN 6	22-R or 23-R
Hydrogen	724	350	DIN 1	22-L
Hydrogen Bromide	634	330	DIN 8	26-R
Hydrogen Chloride	634	330	DIN 8	26-R
Hydrogen Fluoride	638	660 or 670	-	26-R
Hydrogen Sulfide	722	330	DIN 5	-
Krypton	718	580	DIN 6	22-R or 23-R
Neon	718	580	DIN 6	22-R or 23-R
Nitrogen	718	580	DIN 10	22-R or 23-R
Nitrogen Trifluoride	640	330 or 670	DIN 8	-
Nitrous Oxide	712	326	DIN 8	-
Oxygen	714	540	DIN 9	22-R or 23-R
Perfluoropropane	716	660	-	-
Phosphine	632	350 or 660	DIN 1	-
Phosphorus Pentafluoride	642	330 or 660	-	-
Silane	632	350	-	-
Silicon Tetrachloride	636	-	-	-
Silicon Tetrafluoride	642	330	-	22-L
Sulphur Hexafluoride	716	590	DIN 6	26-R
Trichlorosilane	636	-	-	-
Triethylaluminum	726	510	-	-
Tungsten Hexafluoride	638	670	DIN 8	-
Xenon	718	580	DIN 6	22-R

**\* Gas Connection Assignment Table Sources**

- Compressed Gas Association Publication V-1 (1994 Edition)
- Deutscher Institute fur Normung 477 Part 1 (May 1990 Edition)
- Japanese Industrial Standard B8244 (Translated) (1989 Edition)
- Japanese Industrial Standard B8246 (Translated) (1989 Edition)
- International Organization for Standardization ISO/DIS 407 (1983 Edition)